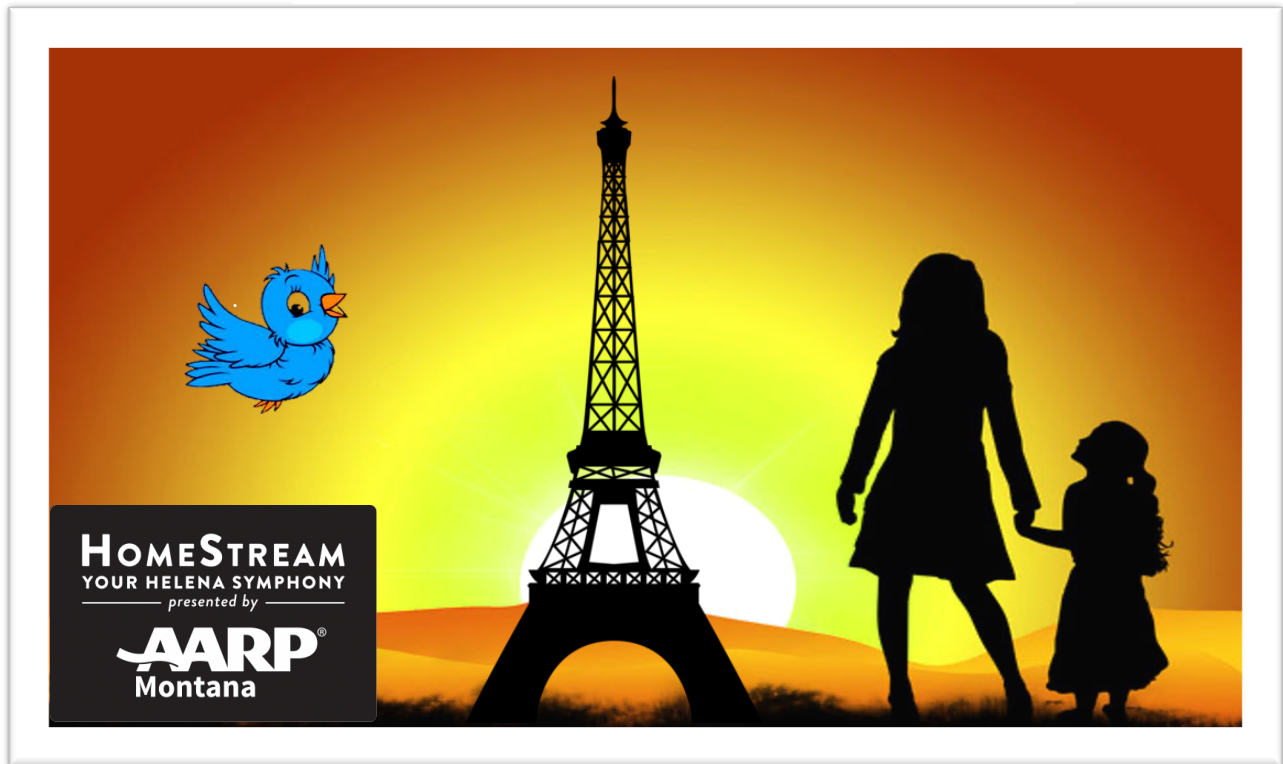


SYMPHONY KIDS



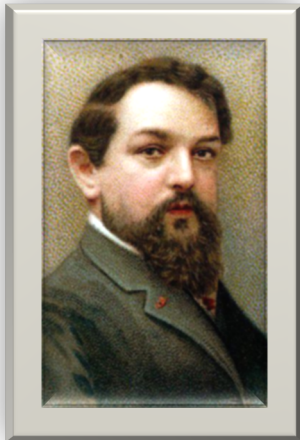
My Mother is the Most Beautiful Woman in the World

*Featuring
Music by Fauré and Debussy*

Saturday, 13 February 2021, 10:00 a.m.

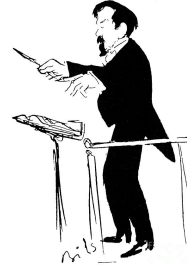
Sponsored with generous support from

Stories of today's French composers:



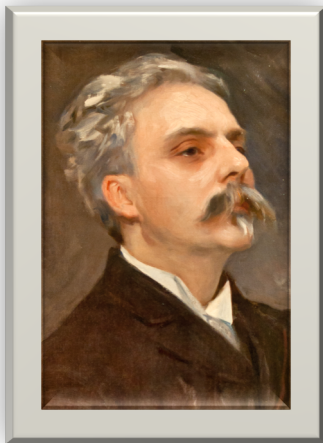
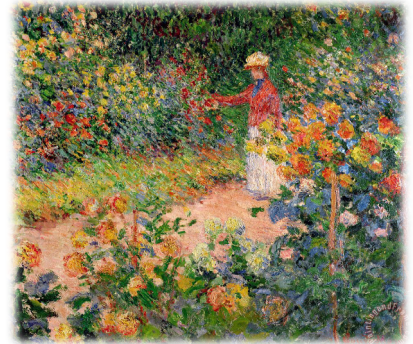
Claude Debussy

August 22, 1862 – March 25, 1918



Claude Debussy really had a double first name: Achille-Claude. He was born in a suburb of Paris. It was his aunt who first noticed how musical he was, so she arranged for him to take piano lessons. When he was only ten, Debussy started studying at the very strict Paris Conservatory.

As a tiny child, Debussy was fascinated by visual art, and as he grew up, he loved the new style called "Impressionism." Instead of painting realistic, lifelike paintings with hard outlines, Impressionists used thousands of dots, or many different shades of color to create the "impression" of what they wanted to depict. Debussy took that idea and applied it to music, creating Impressionism in music.



Gabriel Fauré

May 12, 1845 – November 4, 1924



Gabriel Fauré studied music in Paris. He graduated at the age of 20 with prizes in piano, organ, harmony and composition. In his studies, he learned about many different kinds of music. Some people criticized him for teaching his students new forms of music, but he calmly dismissed his critics and continued to teach.

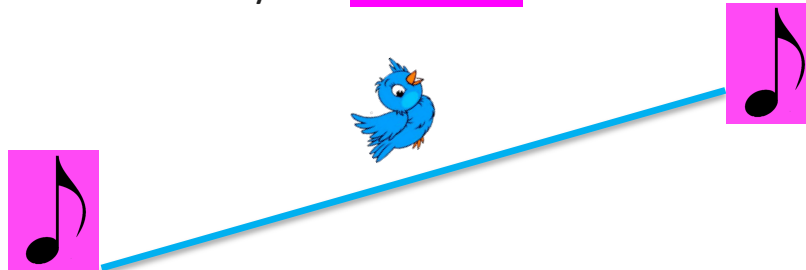
Fauré is known for his small pieces, often written for piano. Like Beethoven, he suffered from loss of hearing, but some of his best music comes from that time.

What can melodies do?

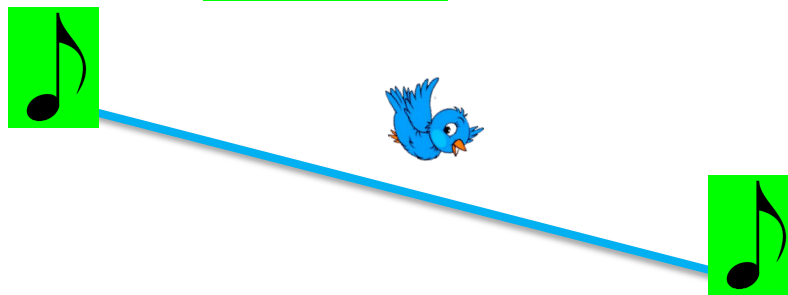
The sounds can **STAY THE SAME**



They can **MOVE UP**



They can **MOVE DOWN**



The flute played melodies staying the **same**, going **down**, and going **up**. Can you find notes in the score which do each of these things? Hint: draw an imaginary line connecting the heads of the notes.



Let's imagine a melody:

Imagine a melody that climbs from a **low** to a **high** pitch, then climbs **back down**. Can your voice do that?



Imagine a melody that winds **round and round**. Can your voice do that?



Here are two melodies. One goes up and down. The other winds round and round.
Check the correct answer for each melody.

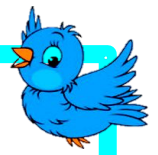


- ☐ up and down
- ☐ round and round



- ☐ up and down
- ☐ round and round

Many different instruments from the orchestra performed for you in today's program. Draw a line from the name of each instrument to its picture.



FLUTE

OBOE

CLARINET

BASSOON

FRENCH HORN

VIOLIN

VIOLA

CELLO

STRING BASS

HARP

PIANO



SYMPHONY KIDS

Allan R. Scott, *music director*
Barbara Berg, *narrator & writer*
Michael Mleko, *conductor*



Actors

Elsie Ambrose, Katie Hill, Malin Ryerson, Mēghan Scott

Musicians



Tiana Grisé, *flute*
Nicole Evans, *oboe*
Jill Brischli, *clarinet*
Rachel Parker, *bassoon*
Erin Vang, *horn*
Stephen Cepeda, Allison Elliott, Sarah Harmsworth, Richard Ferguson,
Ali Schultz Levesque, Ellie Parker, Brian Rogge, Chelsea Pierce, *violins*
Sara Schultz Levesque, Braelyn Germaine, Madeleine Price, *violas*
Linda Kuhn, Carson Yahvah, *cellos*
Trebor Riddle, *bass*
Jeff Vick, *percussion (crotales-antique cymbals)*
Kihana VanDiest, *piano*
Tess Flammond, *harp*



**The Helena Symphony's SYMPHONY KIDS program is made possible
with additional significant support from:**

Piccolo's Music

Edge Marketing and Design

St. Paul's United Methodist Church